

Celebrating 100 Years of Excellence

JOIN THE
PSO
COMMUNITY

PRSRT STANDARD
US POSTAGE
PAID
NEW BRUNSWICK, NJ
PERMIT NO 5274

PSO is known for both its musical excellence and its lively social calendar. From concert afterparties hosted in Plainfield's historic homes to our black-tie gala, our events are warm and welcoming – please join us!

The Centennial Celebration

Plainfield Symphony Orchestra's
100th Season Showcase
Saturday, September 21, 2019
at Plainfield Country Club



The black-tie gala will offer a cocktail reception, dinner and dancing to the music of Peter Duchin and his Orchestra, a silent auction and a special live auction. For tickets and more information, please visit www.plainfieldsymphony.org/events.

**Champagne Brunch
& Holiday Boutique**

Saturday, December 8, 2019
at Plainfield Country Club



Kick off the holiday season with a delightful day of shopping and socializing. Our boutique features exceptional vendors of unique gifts of jewelry, accessories, and home décor.



Post Office Box 5093 ■ Plainfield New Jersey 07061

OUR 2019-2020 CENTENNIAL SEASON

- October 12, 2019 at 7PM
Batik & Bartok
- November 23, 2019 at 7PM
Strauss Meets Sousa
- January 25, 2020 at 3PM
FREE FAMILY CONCERT
Peter and The Wolf
- March 21, 2020 at 7PM
Schumann & Brahms—Spring Festival
- April 25, 2020 at 7PM
Mahler's Resurrection Symphony

Save up to 30% OFF Individual Prices
By Purchasing Season Tickets!

Funding has been made possible by the New Jersey State Council on the Arts, the Department of State, a partner Agency of the National Endowment for the Arts, through a grant administered by the Union County Office of Cultural and Heritage Affairs.

THE 2019-2020 CENTENNIAL SEASON

Our
100th Year Celebration
Plainfield Symphony Orchestra



New Jersey's Oldest Community Symphony
— Charles Prince. Music Director —

1919-2019
PSO Celebrates 100 Years of Excellence

- October 12, 2019 Batik and Bartok
- November 23, 2019 Strauss Meets Sousa
- January 25, 2020 Free Family Concert
- March 21, 2020 Spring Festival: Schumann & Brahms
- April 25, 2020 Mahler's Resurrection Symphony

The Plainfield Symphony Orchestra.

Celebrating 100 Years of Excellence.

In 1919 a group of amateur musicians met in a parlor at Grace Church in Plainfield to organize a community orchestra. The founders engaged the services of noted Dutch conductor Christiaan Kriens, and rehearsals began. With a small orchestra of fifteen to twenty members, the group offered its first private performance later that year.

For 100 years, the Plainfield Symphony Orchestra has educated and uplifted audiences with classical and pops performances, original compositions written for the PSO, and American premieres of international works. As New Jersey's oldest community symphony and the third oldest continuously operating community symphony in the United States, PSO represents the highest standard in musical excellence. Our 2019-2020 Centennial Season celebrates PSO and Plainfield's proud history with these highlights:

- The American premiere of an internationally acclaimed composition performed by the composer
- Viennese waltzes and Sousa marches
- Our annual free family concert with a special celebrity guest as narrator
- A glorious performance of Mahler's Resurrection Symphony with guest chorus and soloists

Join us this year and see why the Plainfield Symphony is thriving as we launch our second century!

Charles Prince, Music Director



With a career spanning more than two decades, Charles Prince has triumphed in multiple musical worlds in both North America and Europe. He has led a wide range of international orchestras from the Moscow Symphony to the WDR Orchestra in Cologne and Essen, Germany, as well as the Munich Philharmonic and orchestras in Switzerland, Austria, Finland and Bulgaria.

As a Pops conductor, he served as Associate Conductor for the New York Pops from 1996 to 2003, leading that orchestra on numerous occasions at Carnegie Hall. He has directed the Operetta Summer in Vienna for nearly a decade; conducted the Tony-Award winning production of James Joyce and Shaun Daveys' *The Dead* on Broadway, Washington and Los Angeles; and led the orchestra with Michael Feinstein performing at Carnegie Hall.

Prince is well known for his conducting of Leonard Bernstein's works. A student of Bernstein's at the Tanglewood Music Festival, he has been music director of *A Leonard Bernstein Gala* presented by the composer's daughter, Jamie Bernstein; conducted the New York City Opera's production of Bernstein's *Candide* in 2017; and conducted performances of *Trouble in Tahiti* at the Berkshire Music Center at Tanglewood.

Charles Prince is a graduate of the Oberlin Conservatory. He has led the Plainfield Symphony Orchestra since 2009.

Saturday October 12, 2019 at 7PM

BATIK & BARTOK

Charles Prince: conductor

Roland Batik: soloist

Batik: *Concerto for Piano and Orchestra No.1, Meditation upon Peace* (American Premiere)

Bartok: *Concerto for Orchestra*

Join us as we open this special season with an important musical event as Austrian pianist Roland Batik joins PSO for the American premiere of his own composition *Concerto for Piano and Orchestra No. 1 - Meditation upon Peace*. First presented at the Vienna Konzerthaus in 1993, the composition established Batik, who is known for his fusion of classical music and jazz, as a highly sought-after composer for chamber music ensembles and symphony orchestras.



PRE CONCERT EVENT

Please join us before the concert for a special pre-concert talk by PSO Music Director Charles Prince and soloist Roland Batik. **This talk is free to all attending the evening's concert. 6:15-6:45 p.m., Assembly Room, Crescent Presbyterian Church** (located behind the sanctuary – attendees should enter through front doors and will be directed to the Assembly Room)

Saturday November 23, 2019 at 7PM

STRAUSS MEETS SOUSA

Charles Prince: conductor

Brian Cheney: soloist, Steven Scheschareg: soloist

Strauss: *Die Fledermaus*

Sousa: Selections featuring the New Jersey Army National Guard 63rd Army Band

You may be dancing in the aisles as PSO rings in the holiday season with a salute to the Viennese waltzes of Strauss. Paired with the marches of John Phillips Sousa, this promises to be a standing room only event.

Die Fledermaus is thoroughly high-spirited, with numerous waltz and polka themes and plays nicely off Sousa's rousing compositions, including "Stars and Stripes Forever," America's official national march. There's no better way to celebrate PSO's Centennial Season than with this festive pairing of PSO favorites!



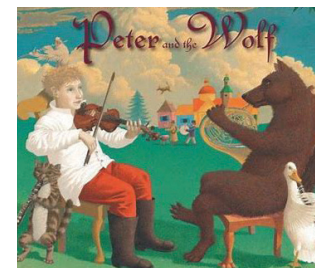
Saturday January 25, 2020 at 3PM

OUR ANNUAL FREE FAMILY CONCERT

Charles Prince: conductor

Surprise Celebrity Guest narrator

Prokofiev: *Peter and the Wolf*



Created in 1936, Sergei Prokofiev's timeless classic *Peter and the Wolf* makes a special return to PSO's centennial program. Concertgoers who remember seeing it as children or seeing it with their own children will be just as enchanted as the children who will hear this for the first time. A special celebrity mystery narrator will add to the excitement!

Saturday March 21, 2020 at 7PM

SCHUMANN SPRING FESTIVAL BRAHMS

Charles Prince: conductor

Evelyn Estava: soloist

Brahms: *Violin Concerto in D Major, Op. 77*

Schumann: *Symphony No. 1 in B flat Major, Op. 38 "Spring Symphony"*

PSO's own concertmaster, violinist Evelyn Estava, takes center stage in this spring celebration featuring major symphonies of Brahms and Schumann. Estava has earned recognition as one of the top performing artists in her native Venezuela and has made many guest soloist appearances with orchestras in Europe and North and South America. The program pairs the much-loved works that evoke spring.



Saturday April 25, 2020 at 7PM

MAHLER THE RESURRECTION SYMPHONY

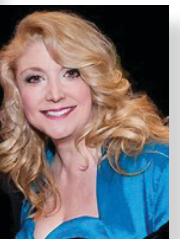
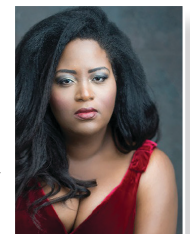
Charles Prince: conductor

Alison Bolshoi: soloist, Helena A. Brown: soloist

Summit Chorale: chorus

Mahler: *Symphony No. 2 "Resurrection Symphony"*

PSO will close the centennial season with Mahler's *Symphony No. 2, the "Resurrection Symphony."* Charles Prince is known for his intense readings of Mahler's work, and this program will feature guest soloists and a full chorus in a stirring finale that will demonstrate the depth and breadth of PSO's musicians.



Ticket Prices:

Reserved \$65 Each/Season \$215

General Admission \$45 Each/Season \$130

Senior/Student Discount \$30 Each/Season \$90

**SAVE UP TO 30% OFF
INDIVIDUAL PRICES
BY PURCHASING
SEASON TICKETS!**

For more information, visit us at www.plainfieldsymphony.org or call us at **908-561-5140**.

Tickets can be purchased online at www.plainfieldsymphony.org/tickets.html or by mail.

Please make payment to the Plainfield Symphony and mail to: Plainfield Symphony, Post Office Box 5093, Plainfield NJ 07061

The Plainfield Symphony is a 501(c)3 organization for your *tax-deductible donation*. PSO welcomes your contributions and thanks all who have supported us so generously!

**All concerts will be performed at the historic
Crescent Avenue Presbyterian Church
716 Watchung Avenue, Plainfield, NJ.**



Like the Plainfield Symphony on Facebook



Follow us on Twitter

**Please support the Plainfield Symphony Orchestra so we can continue to
"Keep the Music Playing!"**